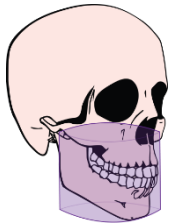


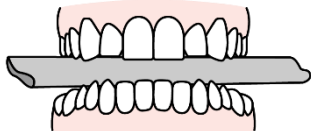
Doctor name: \_\_\_\_\_ Patient name: \_\_\_\_\_ Date: \_\_\_\_\_

Required full jaw scan:      Upper Jaw       Lower Jaw

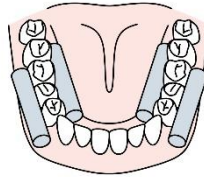
**CBCT guidelines for a partial edentulism:**



*Full jaw scan*



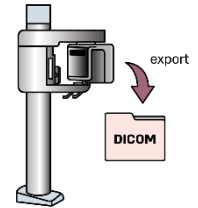
*open mouth*



*soft tissue separation*



*remove all removable appliances*



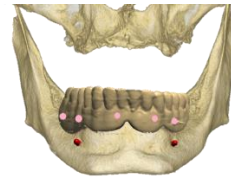
*export .DCM files*

**CBCT guidelines for a fully edentulous jaw: DUAL SCAN TECHNIQUE**

*Prepare a denture with 3D markers on vestibular & oral sides. It is recommended to use a gutta-percha.*



**First scan: Patients denture with markers**



**Second scan: Patient with the marked denture in the mouth.**