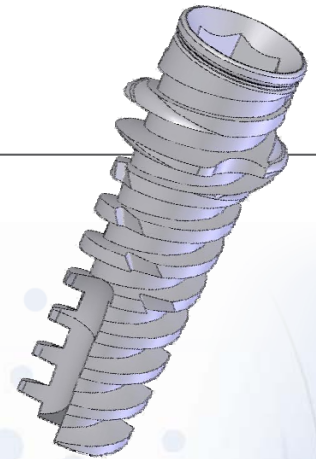


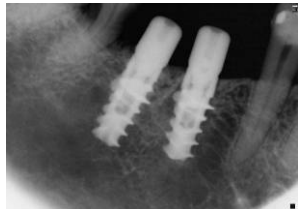
# SATURN

## A New implant for dependable initial stability (Patent pending)

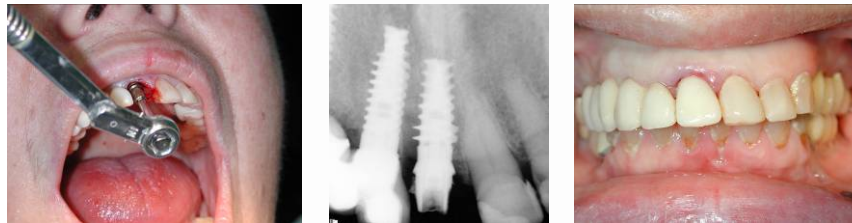
Designed by Dr. Zvi Laster-ISRAEL & Prof. Ole. T. Jensen-USA



Bone to Implant Contact (BIC), is often reduced up to 50% in extraction sites. Saturn, with its wings, enhances considerably BIC, mechanical torsional support and overall stability.



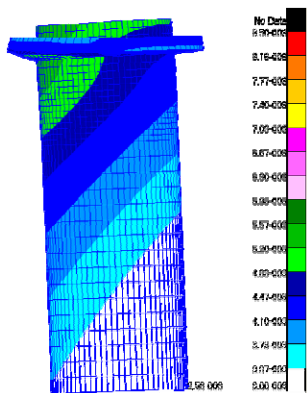
The **SATURN** implant features a specially designed expanded diameter mid-crestal "wing" thread, which provides added bone contact for greater insertion torque for primary stability. The implant is especially useful in esthetic cases where dental extractions are done and implants are placed for immediate provisional loading.



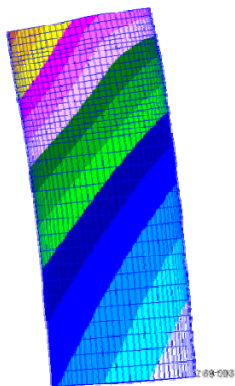
Primary stability of the Saturn implant in the empty socket is over 40 Ncm, enabling the immediate placement of esthetic temporary crowns.

"**Saturn**" is also suitable in the cases of open and closed sinus grafting. Expanded diameter threads provide **excellent initial stability** even if the residual crestal height is low as only 3 or 4 mms.

In addition, the Saturn is suitable for implantation for lower molar extraction sites. When there is adequate room (14 mm mesio-distal).



Saturn - 5.2 Micron

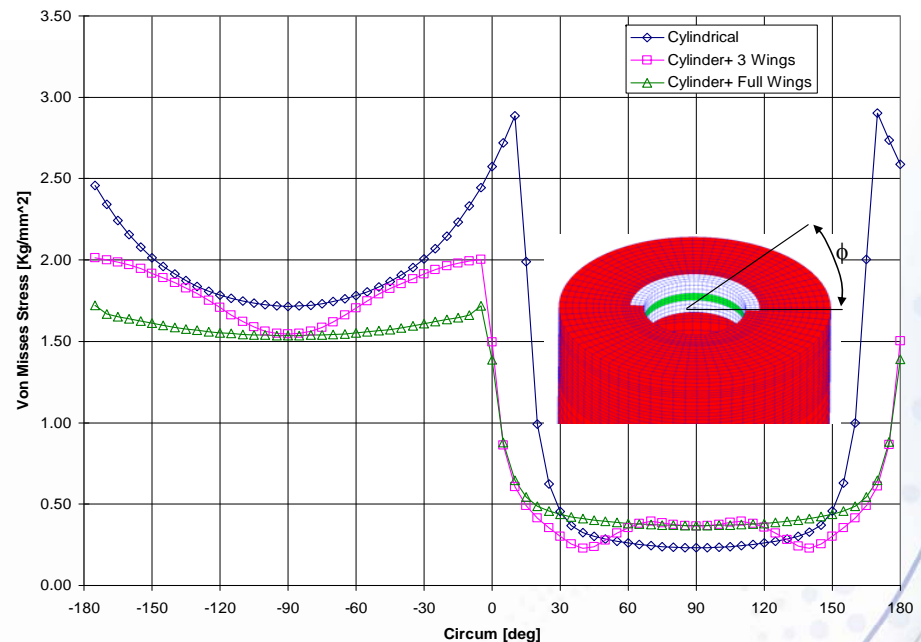
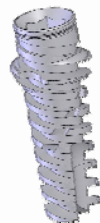


Regular implant - 8.5Micron

Experimental displacement of the implant by a 20° angulated 20 kg load led to 60% less maximum implant displacement.

**Reduced displacement and stress distribution** at the neck may reduce bone loss after loading.

Finite Element Analysis demonstrates that the added wings considerably reduce stress distribution at the implant neck, thus reducing potential for bone loss at the crest.



Ultimately, the **Saturn implant is the optimal choice for immediate loading** after extraction and immediate provisionalization, but the implant is also useful for sinus lift cases and when poor quality bone is present.

Saturn's "wings" provide substantial initial stability, reduce stress distribution at the alveolar cortex and optimize esthetic restoration

**The Saturn implant is manufactured and distributed by CORTEX-DENTAL IMPLANTS ISRAEL.**

For further details please visit us at [www.cortex-dental.com](http://www.cortex-dental.com)

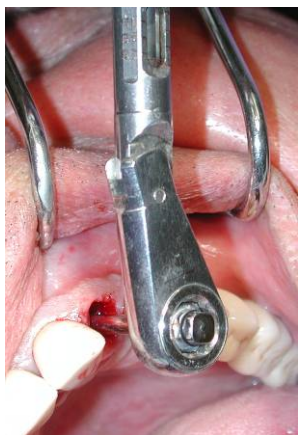
# Appendix

## Cases and legends



Demo of the "Saturn" in an empty socket. The wings are anchored at the condensed walls of the socket. As shown in the demo, the thread penetrates the socket's wall in one spot and the rest of the wing taps the way in at the same spot.

2 lateral incisors well anchored in the socket



Initial stability of more than 40Cm N. Enough for immediate loading with temporary crowns.

The "Saturn" provides excellent initial stability in Sinus lifting (Open & Closed)



In cases of very poor quality of bone (Class 4), The "Saturn" provides initial stability with high torque.

